

AUG 19 2024

**ADDENDUM: HISTORICAL PIT(S) AND RECLAMATION ACTIVITY**

The initial aggregate pit was developed by Wiltbank Farms LLC. In 1980. The Wiltbank family operated the pit until approximately 1985.

In 1985 Day and Son's Sand and Gravel located in St. Johns, Arizona leased and operated the pit until approximately 1990.

In 1990 the aggregate pit was closed and the land was returned to livestock grazing. The slopes were graded and native plants returned. The retention ponds were left in place to allow for storage of water for the farm's livestock operation.

Arcosa Aggregates Inc. with offices in Springerville, Arizona took over operations in 2021. Arcosa utilized both leased State Trust Land for their material and stored the marketable material on the Wiltbank Farms property. Arcosa reclaimed the pit in conjunction and in compliance with the State Trust Land specifications. The marketable material has been stored on the Wiltbank property and is being removed as it is sold.

**FIGURE 1A WILTBANK HISTORICAL PIT**

**FIGURE 2A ARCOSA RECLAIMED AGGREGATE PIT**

**FIGURE 3A WILTBANK HISTORICAL PIT CONTOURS**

**FIGURE 4A ARCOSA RECLAIMED AGGREGATE PIT CONTOURS**

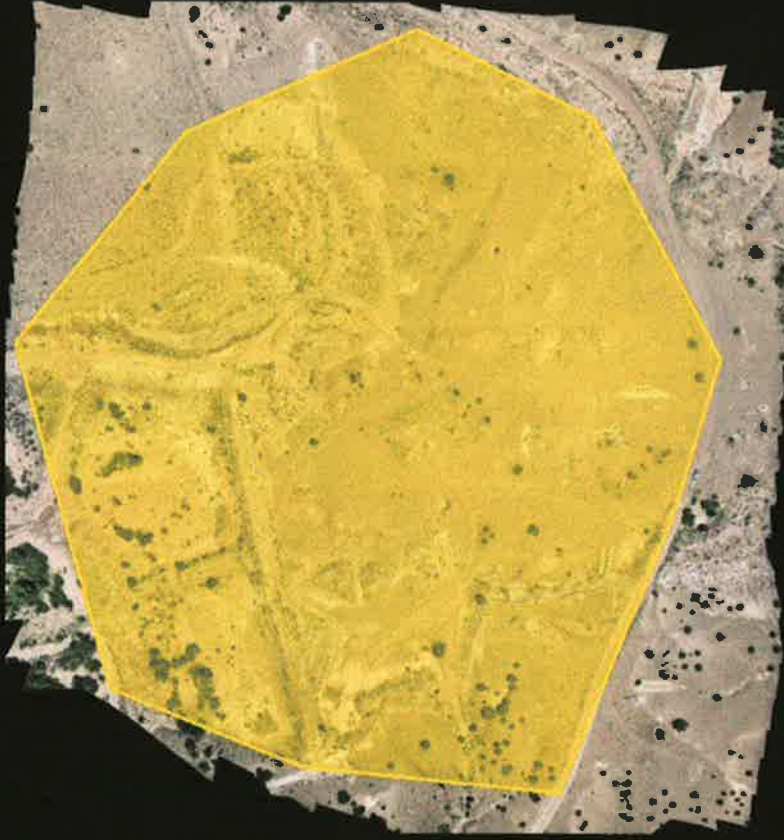
LEGEND

ADDENDUM

FIGURE 1

WILTBANK HISTORICAL  
PIT

WILTBANK HISTORICAL PIT  
1980 to 1990



760ftus



Site: WILCOX PIT

Survey: Aug 06, 2024

File created: Aug 13, 2024



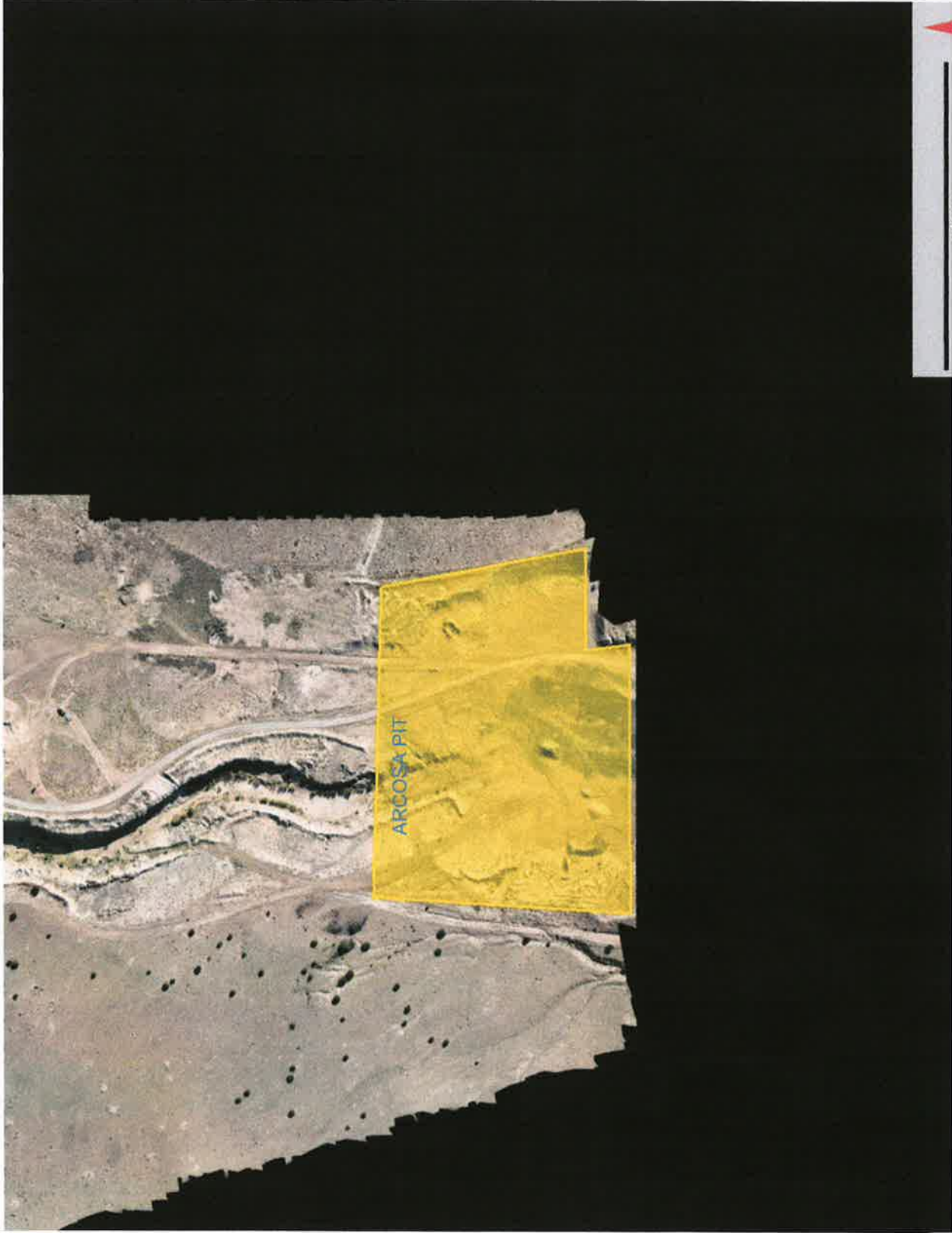
propeller

LEGEND

ADDENDUM

FIGURE 2A:

ARCOSA PIT



Site: WILLCOX PIT  
Survey: 04 Oct 2023  
File created: Aug 13, 2024

portal logo



WILT BANK HISTORICAL PIT  
CONTOURS



# ARCOSA PIT RECLAIMED CONTOURS

